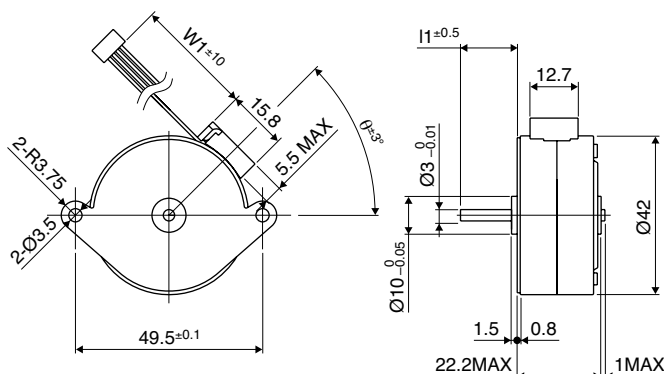


■ Dimensions



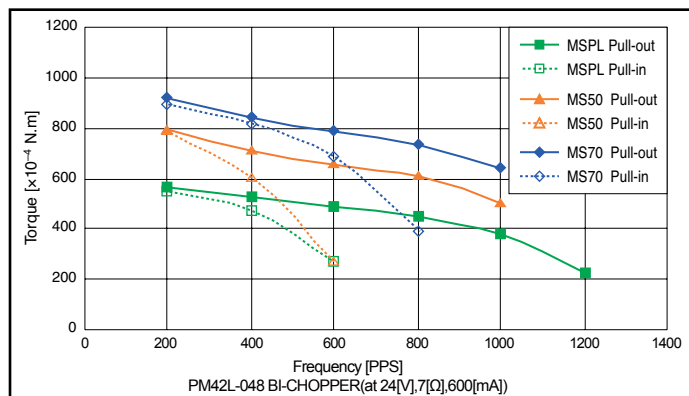
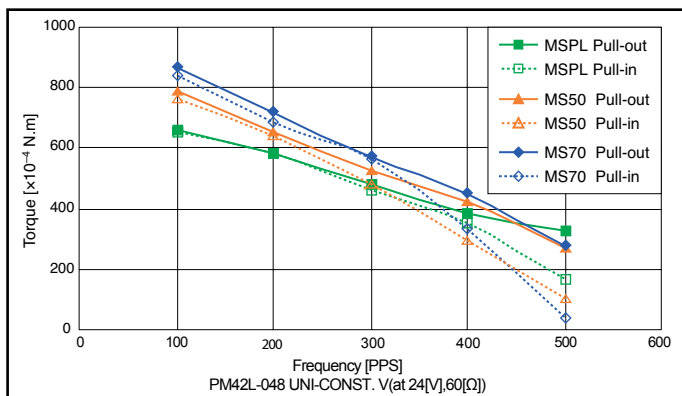
PM Motor

Please contact our sales for inventory and lot information. Specification may be changed without notice.

■ Reference Characteristics

Motor Size	PM42L-048	
Number of Steps per Rotation	48(7.5°/Step)	
Drive Method	2-2 Phase	
Drive Circuit	Unipolar Const. Volt.	Bipolar Chopper
Drive Voltage	24[V]	24[V]
Current/Phase		600 [mA]
Coil Resistance/Phase	60 [Ω]	7 [Ω]
Drive IC	2SC3346	UDN2916B-V
Magnet Material	Ferrite plastic magnet (MSPL) Polar anisotropy ferrite sintered magnet (MS50) Nd-Fe-B bonded magnet (MS70)	
Insulation Resistance	100M [Ω] MIN	
Dielectric Strength	AC 500 [V] 1 [min]	
Class of Insulation	CLASS E (except lead wire)	
Operating Temperature	-10[°C] ~ 50 [°C]	
Storage Temperature	-30 [°C] ~ 80 [°C]	
Operating Humidity	20 [%] RH ~ 90 [%] RH	

■ Torque Characteristics



These torque values are reference only. Heat radiation conditions and temperature rise effect by duty are different on each equipment, therefore please select motors after considering the heat conditions in the actual equipment.

■ Applications

- OA Equipment: Printers/Scanners
- Industrial equipment: Flow control valves
- Toys: Slot machines
- Home automation appliances: Sewing machines